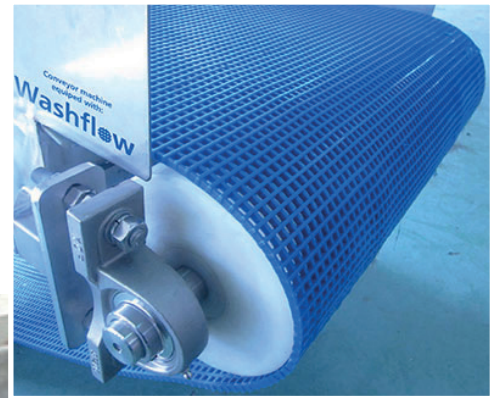


esbelt.com



## Washflow® belts in the Shellfish industry

A new concept in belts for the washing and conveyance of shellfish.

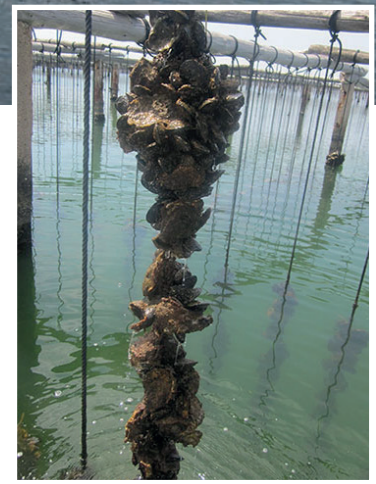
The light, flexible design of the **Washflow**® belt, makes it the best option for washing and conveying shellfish, where stainless steel mesh or modular belts are traditionally used. The washflow belts offers a longer working life and facilitates cleaning and maintenance tasks.

## High performance Polyurethane

*Tested successfully in Cancale, Bretagne*

Excellent resistance to:

- ABRASION
- HYDROLYSIS
- OUTDOOR Conditions
- EU 10/2011 Food quality



### General advantages:

Lightweight (low electricity consumption).

Flexible (permits small flexing and back-flexing diameter pulleys) even at low temperatures.

No noise

Low maintenance

Good performance with oils and acids.

Easy to clean (less water consumption)

Different grid sizes:  
6 x 6 mm / 12 x 12 mm adapting to different granulometries of solids or water flows.

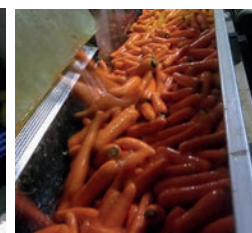
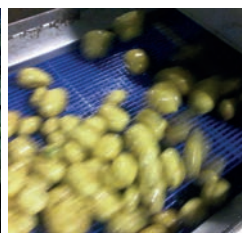
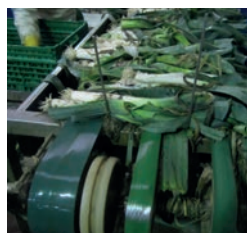


### Other applications:

- Conveyance, washing and rinsing of vegetables, olives, fruit, fish and more....
- Production of prepared foods (e.g. salads).
- Desalting meats.
- Grey water treatment in industry in general.
- ....In summary, all applications which require continuous conveyance, rinsing or draining.

### Other sectors:

- Olive
- Canned vegetables
- Fish
- Vegetable processing
- Meat industry





competitors' stainless mesh belt



esbelt WASHFLOW belt

*Dirt, soil and stones that have to be separated from the product get stuck in the holes in modular belts.*



**Modular belt.**

## Advantages of **Washflow** compared to the competitors' stainless steel mesh belts.

- **A SINGLE 100% HOMOGENOUS ELEMENT (MONOBLOCK).**  
No elements susceptible to detachment or breakage.
- **IT DOES NOT GET STUCK** due to encrusted **BROKEN SHELLS** or **FOREIGN BODIES**.
- The **DIFFERENT GRID SIZES (6x6 or 12x12), FACILITATE DRAINAGE** in the washing process.
- Their **PRICE**.



## Benefits of **Washflow** for the user:

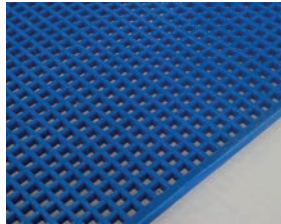
- **LONGER LASTING THAN MODULAR AND MESH BELTS.** Designed without joints (pins) or added lateral reinforcement, which can come loose and deteriorate.
- **CLEANING AND MAINTENANCE.** Its simple, uniform structure permits fast, simple and effective cleaning.
- **EASY TO REPLACE.** Smooth traditional belts can be replaced with **Washflow** without change to the conveyor.
- **REDUCED MAINTENANCE COSTS.** Very light, flexible and tear-resistant PU belt with internal reinforcement, resulting in very few breaks, faults and unexpected stoppages. It does not damage the conveyor structure due to abrasion/wear, unlike heavier, more rigid modular belts. Easy belt centring and guiding.

# Technical data sheet

Type	Material	Hardness °ShA	Colour	Grid size mm	Constant (intermittent) temperature °C	Belt thickness mm	Belt weight kg/m <sup>2</sup>	Friction coefficient						Min. diameter (without solid transi- tion zone) mm	Working load at 1% elong. N/mm	Working load at 1.2% elong. N/mm	Breaking load belt N/mm	Max. roll width mm
								Wood		Steel		Plastic						
								SK	DK	SK	DK	SK	DK					
WFU06A06	PU	85	Blue 06	6 x 6	-25 (-30) +60 (70)	5,80	3,30	0,50	0,53	0,33	0,29	0,42	0,44	60	10	13	30	1450
WFU12A06	PU	85	Blue 06	12 x 12	-25 (-30) +60 (70)	7,45	3,90	0,62	0,64	0,51	0,42	0,61	0,57	80	25	31	63	1450



Joint with stainless steel fasteners.



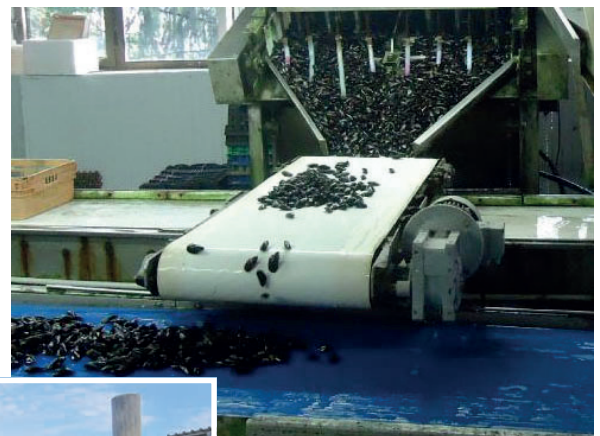
Joint without fully covered transverse zone (flexible joint, almost invisible)

## Other esbelt products in the shellfish industry

ASTER 36X1C

NOVAK and CLINA (CK)

BREDA 20CK (with reinforced profiles) for the classification process.



November 2022

## Esbelt Group companies:

### Esbelt, S.A.

Provença, 385  
08025 Barcelona  
Spain  
Te. +34-93 207 33 11  
www.esbelt.com  
esbelt@esbelt.com

### Esbelt GmbH

Habichtweg 2  
41468 Neuss  
Germany  
Tel. +49-2131 9203-0  
www.esbelt.de  
info@esbelt.de

### Esbelt SAS

190 Av. du Roulage / ZA du Roulage  
32600 Pujaudran  
France  
Tel. +33-5 42 54 54 54  
www.esbelt.fr  
esbelt@esbelt.fr

### Esbelt Corporation

13975 Riverport Place - Suite 105  
Maryland Heights, MO 63043  
USA  
Tel: +1-636 294 3200  
www.esbelt.us  
esbelt@esbelt.us

### Esbelt ApS

Agerhatten 16B - Indgang 2  
DK-5220 Odense SØ  
Denmark  
Tel. +45 70 20 62 09  
www.esbelt.dk  
esbelt@esbelt.dk